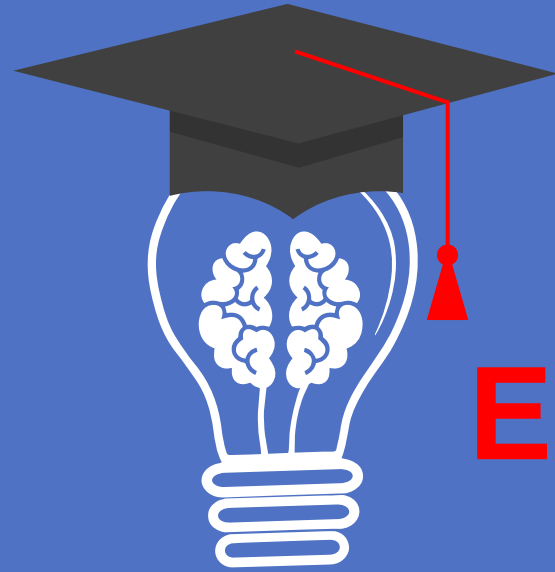


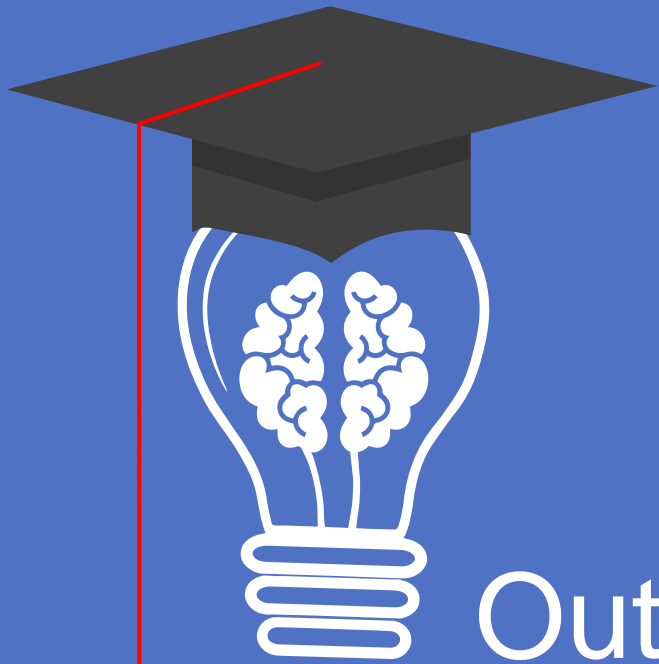
# WHY STUDY ENGINEERING ETHICS ?

Jeddah Yanti, S.Si., M.Sc.

[Jeddah.yanti@staff.uma.ac.id](mailto:Jeddah.yanti@staff.uma.ac.id)



**E**ngineering



## Outline



What is Ethics ?



Personal Ethics



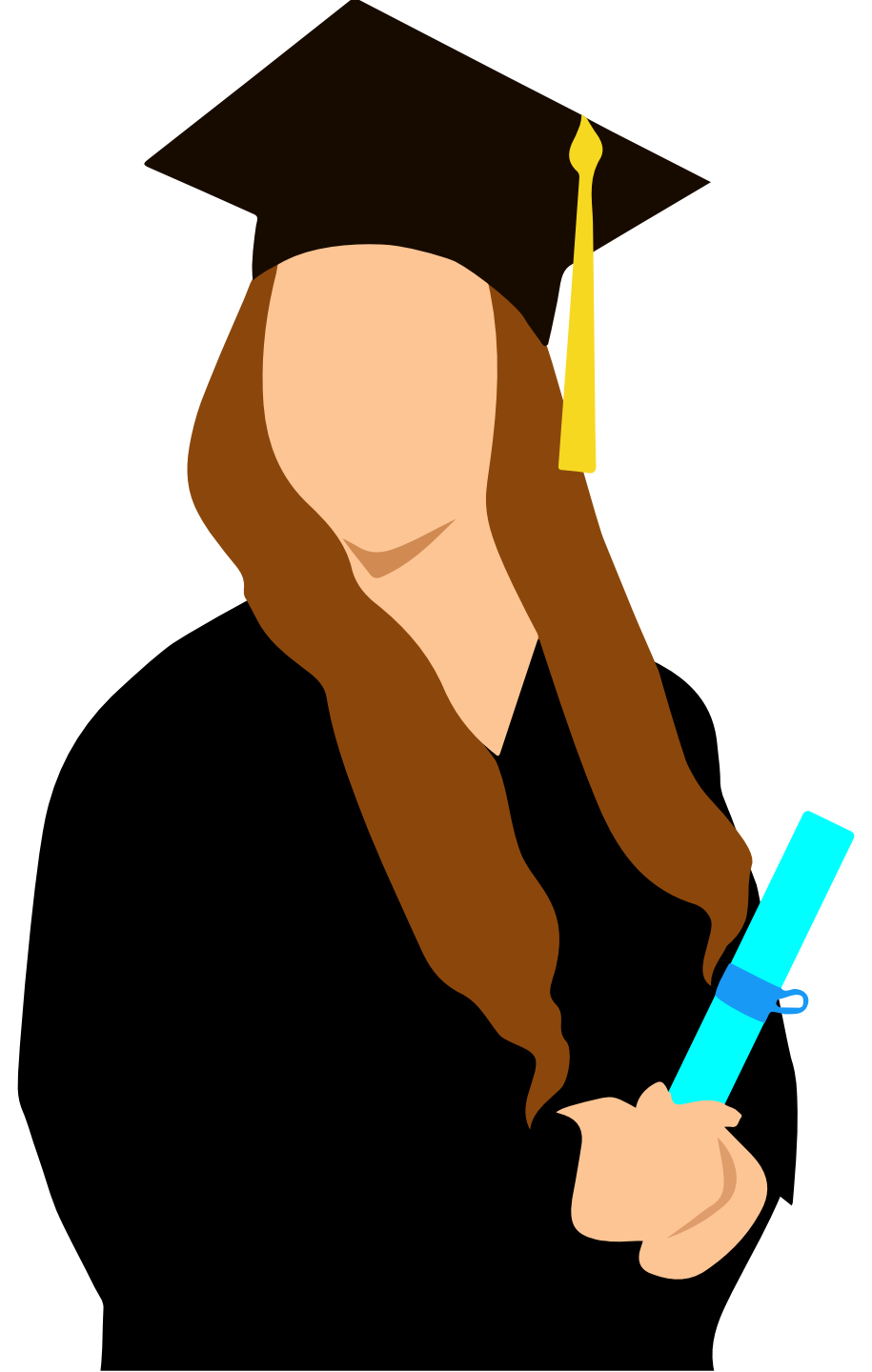
Your Profession is Part of Your Identity



Three Stages in the Development of Professional Identity

# What is **Ethics**

- ✓ Ethics = general nature of morals and of the specific moral **choices** made by individuals.
- ✓ Morals involve conforming to **established** or **accepted** ideas of **right** and **wrong** (as generally dictated by society).
- ✓ Ethical issues often involve subtle distinctions, such as the difference between **fairness** and **equity**.
- ✓ **Guidelines** you use to make decisions each day.
- ✓ *engineering ethics consists of the responsibilities and rights that ought to be endorsed by those engaged in engineering, and also of desirable ideals and personal commitments in engineering*



# Personal Ethics

Consistent ethical living provides health benefits

Ignoring or being inconsistent can have immediate impact

Can be challenging to adhere to consistently



Set of formal or informal principles

Some people have clear, well-defined

Others' are inconsistent in applying a set

A close-up photograph of a graduation cap (mortarboard) with a red and black tassel. A white diploma is tucked into the cap. The background is dark and textured.

# Your Profession is Part of Your Identity

- ✓ A person's profession is a part of her personal identity.
- ✓ Engineering is a profession
- ✓ Engineering codes impose on engineers an obligation to promote the public good, sometimes interpreted as well-being and also as welfare or quality of life.
- ✓ Not engaging in professionally prohibited actions, preventing harm to the public, and actively promoting the public's well-being.

# Three Stages in the Development of Professional Identity

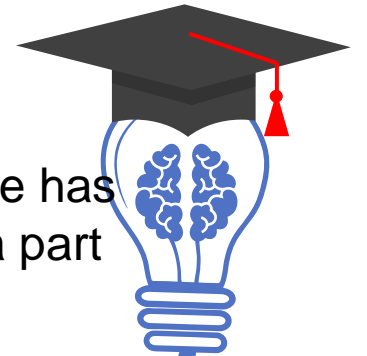
Professionalism is meeting fixed and clearly defined guidelines and expectations that are external to one's character.

## Independent Operator

Rather than identifying professionalism with fixed rules and behaviors, professionalism is seen as conforming to the expectations of other professionals, especially of the exemplary type.

## Team-Oriented Idealist

Rather than identifying professionalism with external expectations of one's peers, one has integrated his personal values with those of his profession. Professional values are a part of who one is. This stage is often not fully achieved until mid-life.



## Self-Defining or Integrated Professional.

**Refernces :**

**1. Buku Ajar terlampir di e-learning**

